

**LEGEND:**

	Sign Location		Detector
	Close One Barricade		Traffic Control Person
	Closure Area		
	No Parking		
	Pedestrian Route		

**VALLEY TRAFFIC SYSTEMS, INC.**  
 TRAFFIC MANAGEMENT DIVISION  
 8779 198A STREET  
 LANGLEY BC V3R 5P7  
 PHONE: 604-813-0210  
 FAX: 604-813-3861

**REVISIONS:**

DATE	DETAILS

**NOTES:**

1. Dates: TBD
2. Hours of Operation: TBD
3. Duration: TBD
4. Traffic Plan based on a 50 km/h speed zone
5. TCPs to assist pedestrians and cyclists as required
6. Traffic specifications based on the MOT manual for work on Roadways (1999)

MUNICIPAL PROJECT NO. \_\_\_\_\_

MUNICIPAL CONTACT: \_\_\_\_\_

ON-SITE CONTACT: \_\_\_\_\_  
 Phone: 604-805-7922

BUS STOP(S) TO BE REMOVED: N/A

PARKING METERS TO BE REMOVED: N/A

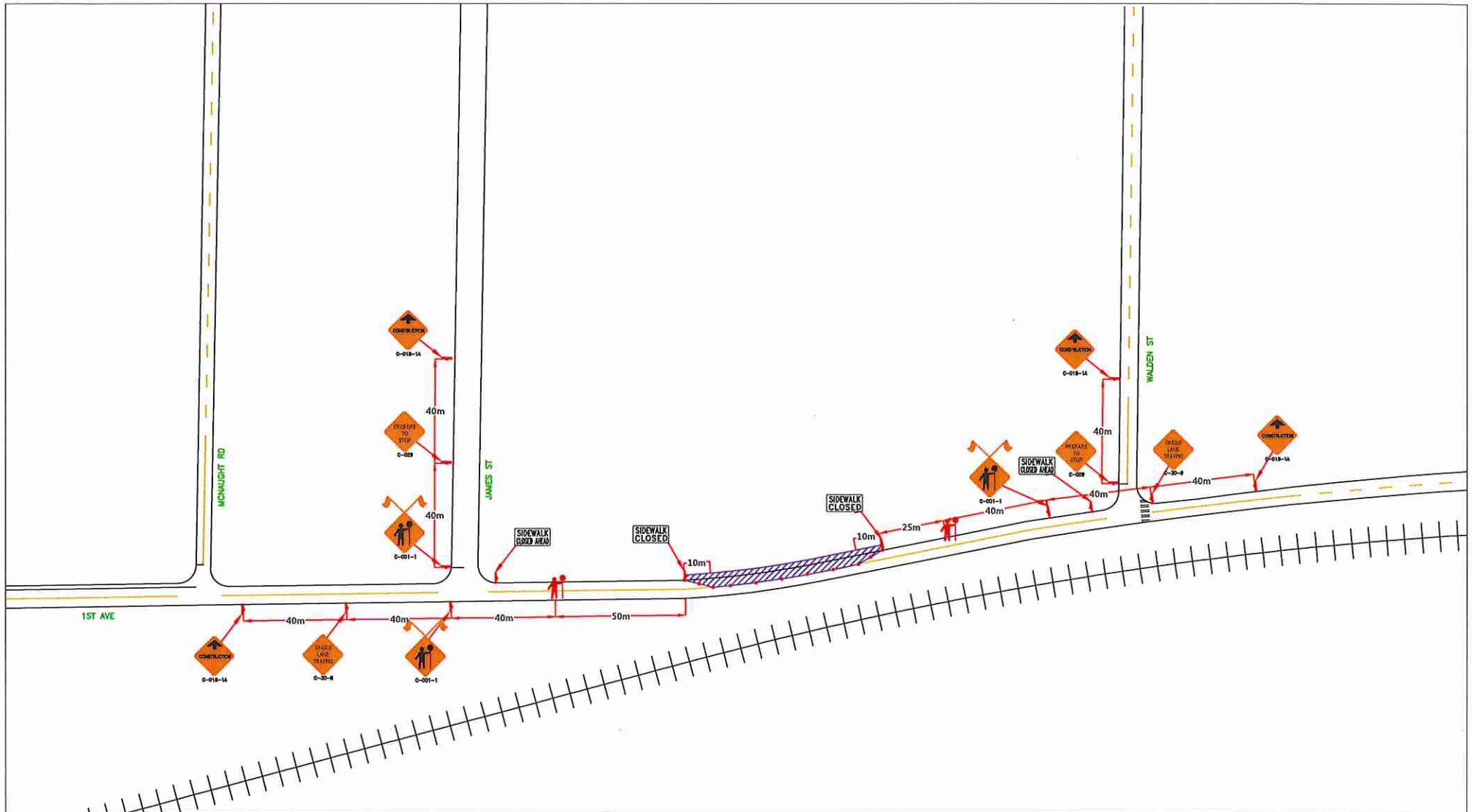
**M&M EXCAVATING SERVICES**

CITY OF CHILLIWACK: 47045 1ST AVE

Traffic Control Plan: Single Lane Alternating Traffic Plan  
 with Sidewalk Closure on 1st Ave

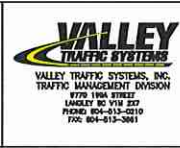
SCALE: NTS	DATE: 12.03.2018	VIS PROJ. NO.: 16459	DWG. NO.: DWG01	REV: 00	DWG: SAS
------------	------------------	----------------------	-----------------	---------	----------

ENGINEER SEAL



**LEGEND:**

	Sign Location		Detector
	Class One Barricade		Traffic Control Person
	Closure Area		
	No Parking		
	Pedestrian Route		



**REVISIONS:**

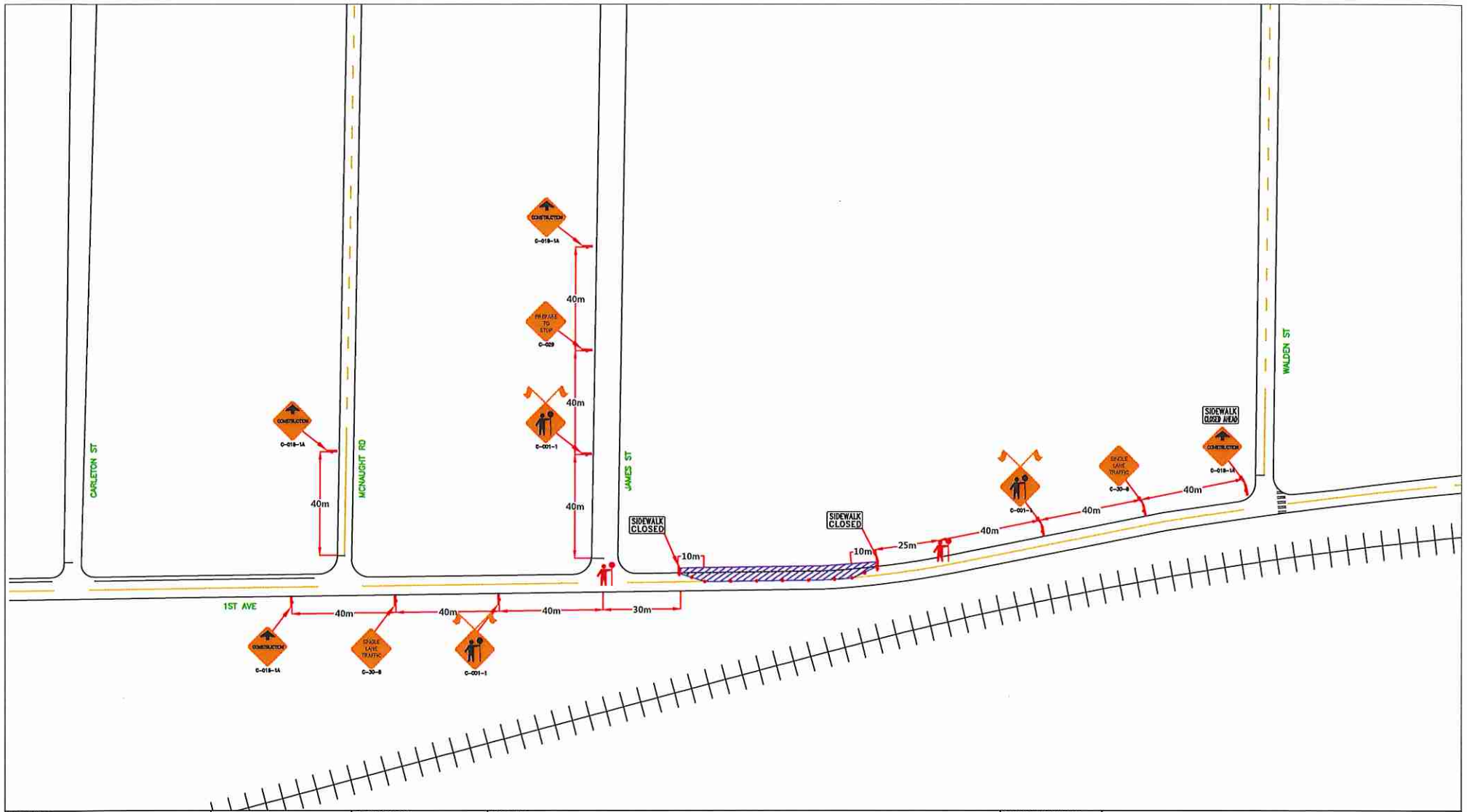
DATE	DETAILS

**NOTES:**

- Dates: TBD
- Hours of Operation: TBD
- Duration: TBD
- Traffic Plan based on a 50 km/h speed zone
- TCPs to assist pedestrians and cyclists as required
- Traffic specifications based on the MOT manual for work on Roadways (1999)

MUNICIPAL PROJECT NO.	
MUNICIPAL CONTACT:	TPO
ONSITE CONTACT:	
Phone: Bill	604-508-7222
Cell: STOP(S) TO BE REMOVED	N/A
WORKING METERS TO BE REMOVED:	N/A

<b>M&amp;M EXCAVATING SERVICES</b>					
CITY OF CHILLIWACK: 47045 1ST AVE					
 	ENGINEER SEAL				
	Traffic Control Plan: Single Lane Alternating Traffic Plan with Sidewalk Closure on 1st Ave				
SCALE: NTS	DATE: 12.03.2018	YES PROJ. NO.: 18459	DRAW. NO.: DW002	REV. NO.: 00	SAS



**LEGEND:**

- Sign Location
- Detector
- Class One Barricade
- Closure Area
- No Parking
- Pedestrian Route
- Traffic Control Person



**REVISIONS:**

DATE	DETAILS

- NOTES:**
1. Dates: TBD
  2. Hours of Operation: TBD
  3. Duration: TBD
  4. Traffic Plan based on a 50 km/h speed zone
  5. TCPs to assist pedestrians and cyclists as required
  6. Traffic specifications based on the MOT manual for work on Roadways (1999)

MUNICIPAL PROJECT NO.  
 MUNICIPAL CONTRACT:  
 T20  
 ON-SITE CONTACT:  
 Ryan King  
 604-692-7292  
 BUS STOP(S) TO BE REMOVED:  
 N/A  
 PARKING METERS TO BE REMOVED:  
 N/A

**M&M EXCAVATING SERVICES**

CITY OF CHILLIWACK: 47045 1ST AVE

Traffic Control Plan: Single Lane Alternating Traffic Plan  
 with Sidewalk Closure on 1st Ave

SCALE:	DATE:	VIS PROJ. NO.:	DRAW. NO.:	REV.:	BY:
NTS	12.03.2018	16459	DWG03	00	SAS

ENGINEER SEAL  
© Valley Traffic Management/Current Projects/1004